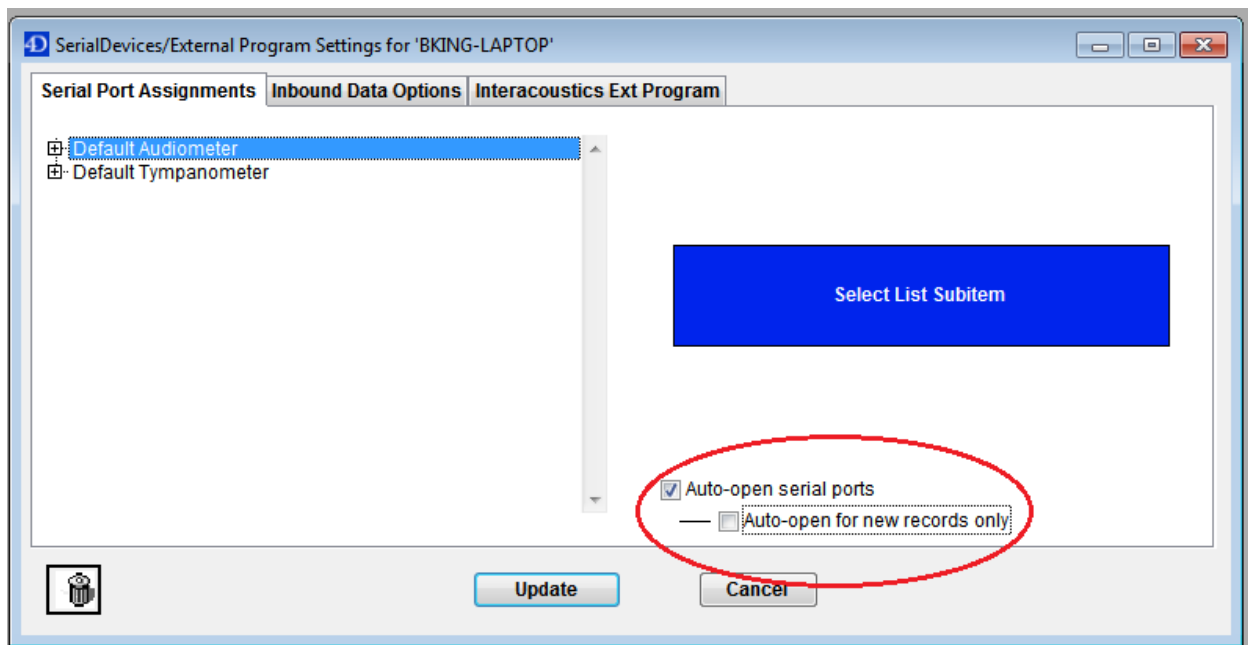


Setting Serial Ports to Automatically Open

Log into AudBase under an Administrator or Sub-Administrator account

- Click on “File” then select “Preferences”
- Select “Audiology (3)”
- On the right side of the window at the bottom, click “Assignments/Settings”
- Verify that “Auto-open serial ports” box **IS** checked
- Verify that “Auto-open for new records only” is **NOT** checked
 - o See image below



- Once confirmed, click “Update”
- Select “Close”