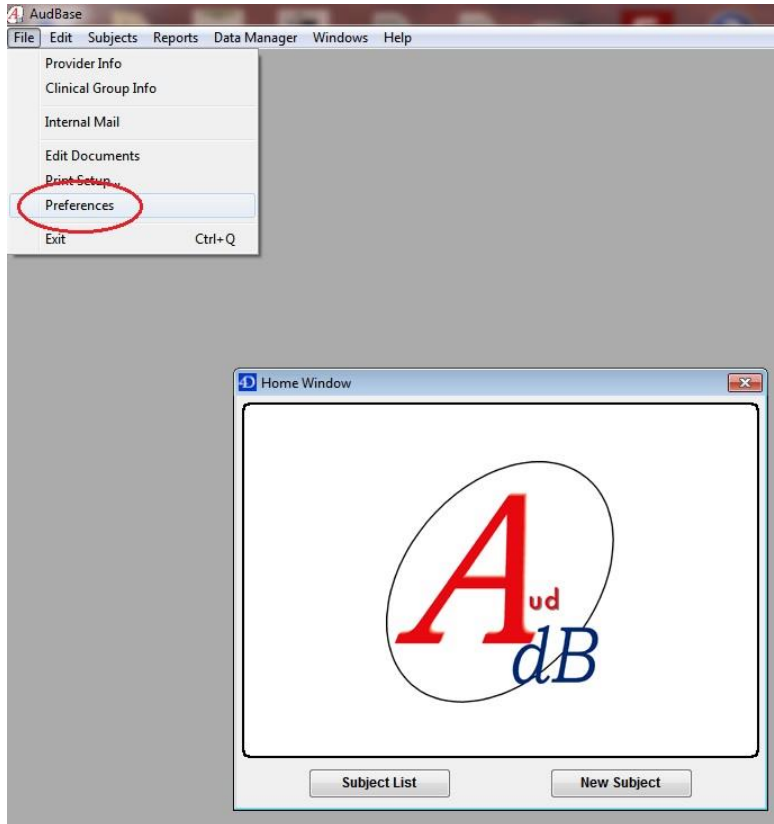
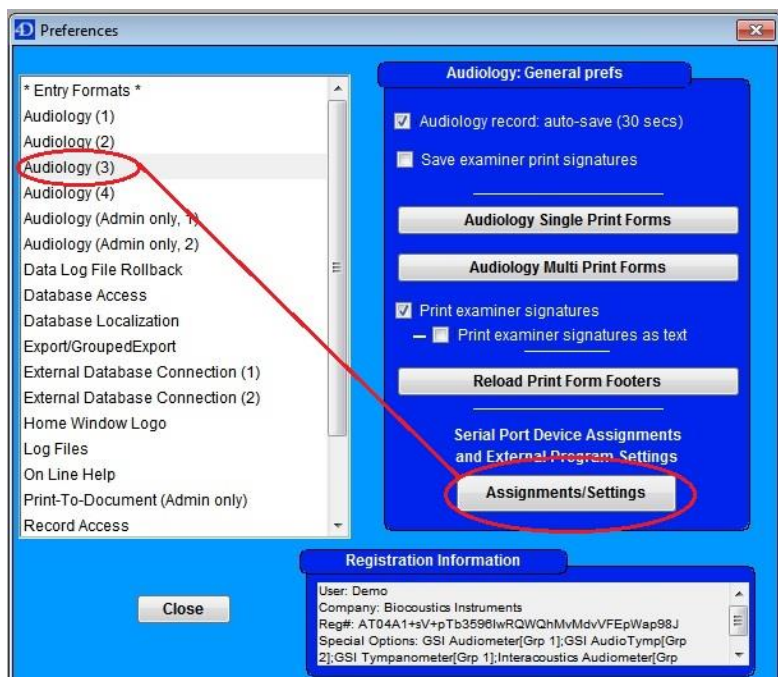


## Setting COM Ports to Auto Open

- Log into AudBase
- On Home Screen
  - o Select File from top toolbar
  - o Click "Preferences"



- In Preferences, Select "Audiology 3"
- On right, click "Assignments/Settings"



From the Assignments/Settings Menu Screen

- Verify that there is check mark for “Auto-open serial ports”
- Verify that “Auto-open for new records only” is **NOT** checked
- Click “Update”

