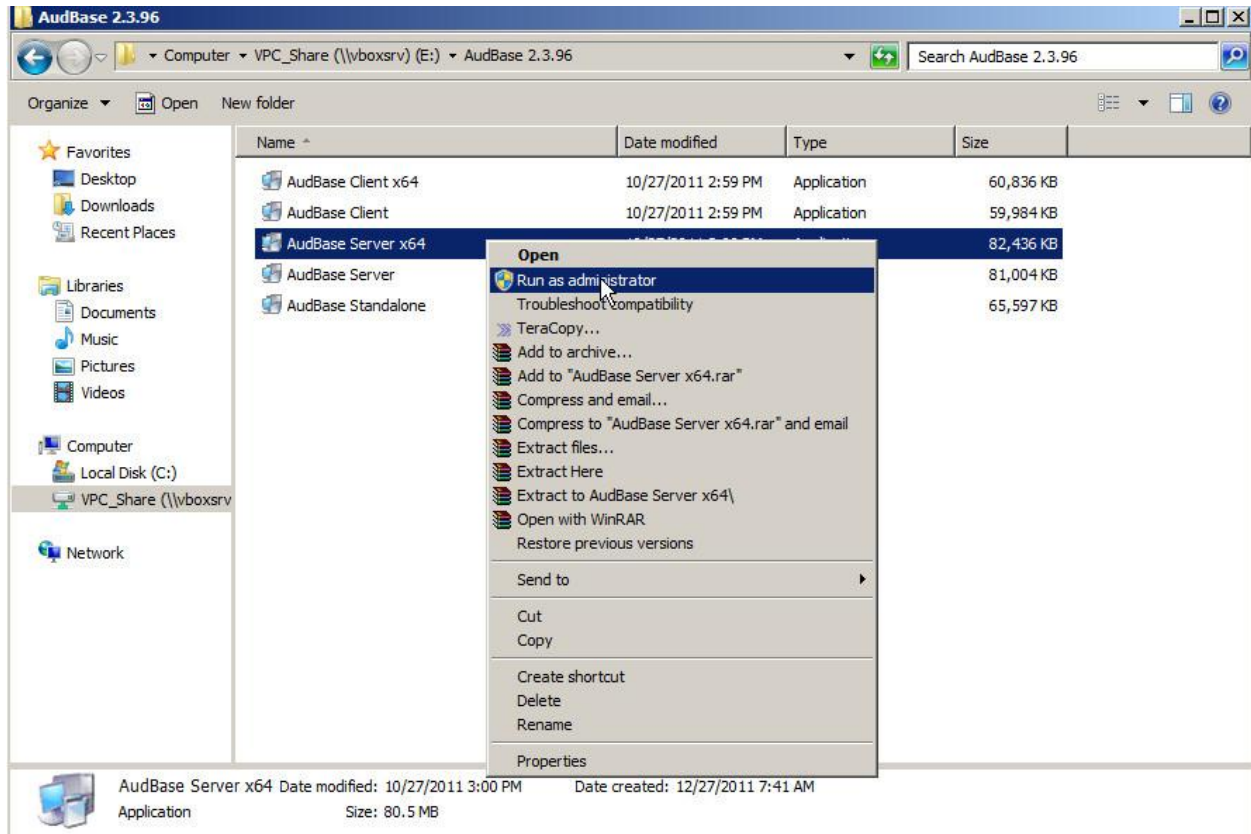


Installation instructions for AudBase 2.3.6 and later for Windows Server
2008/2008 R2
(Instructions common between x86 and x64 Operating System Variants)
Rev 01.24.12ES



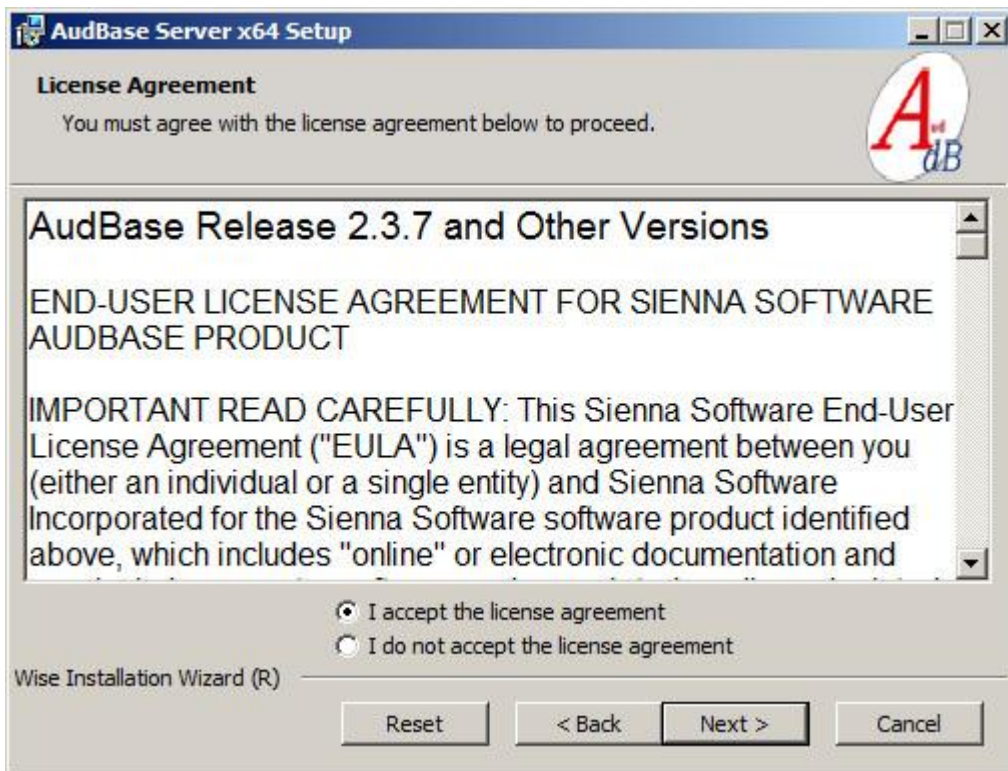
(Figure A)

- Under an administrator level user account, navigate to the folder location that contains the AudBase installation files
- Right click on the appropriate version for your hosting operating system and select “Run as administrator” from the context menu (figure A)



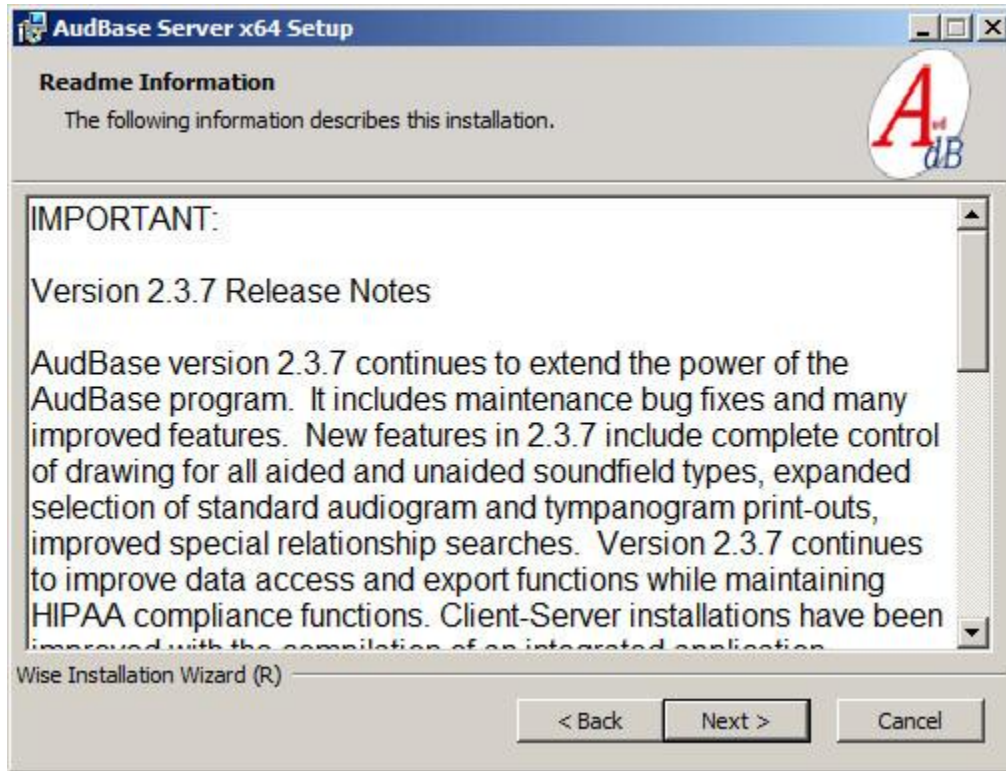
(Figure B)

- Click "Next" to begin the installation process (Figure B)



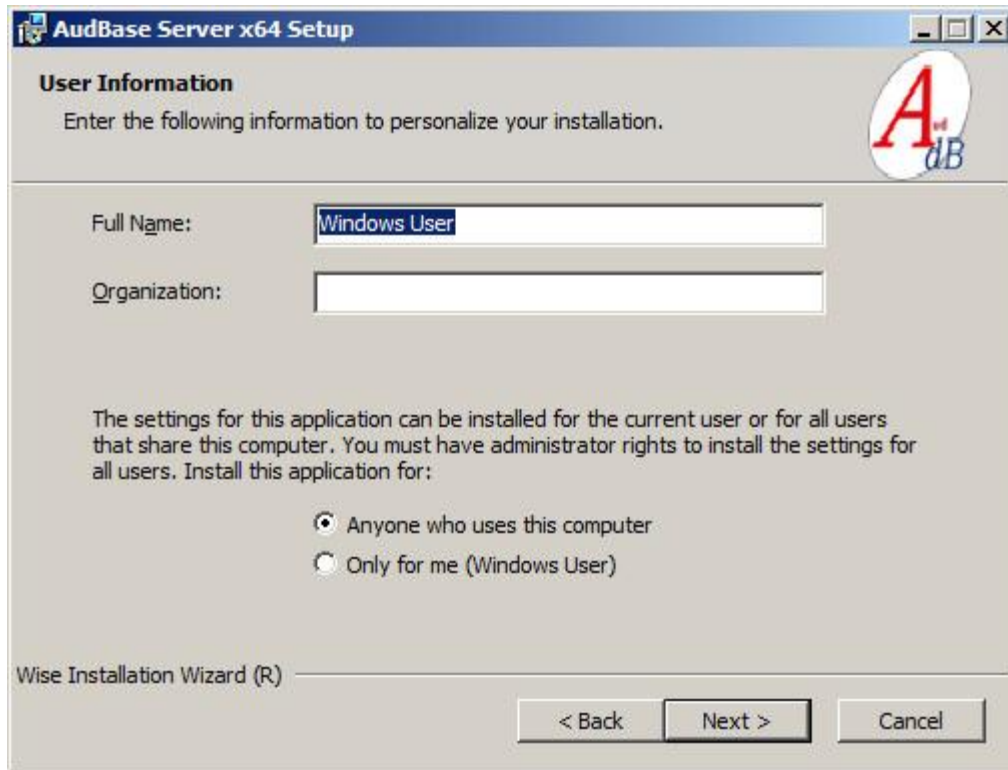
(Figure C)

- Read and accept the End User License Agreement to proceed (Figure C)



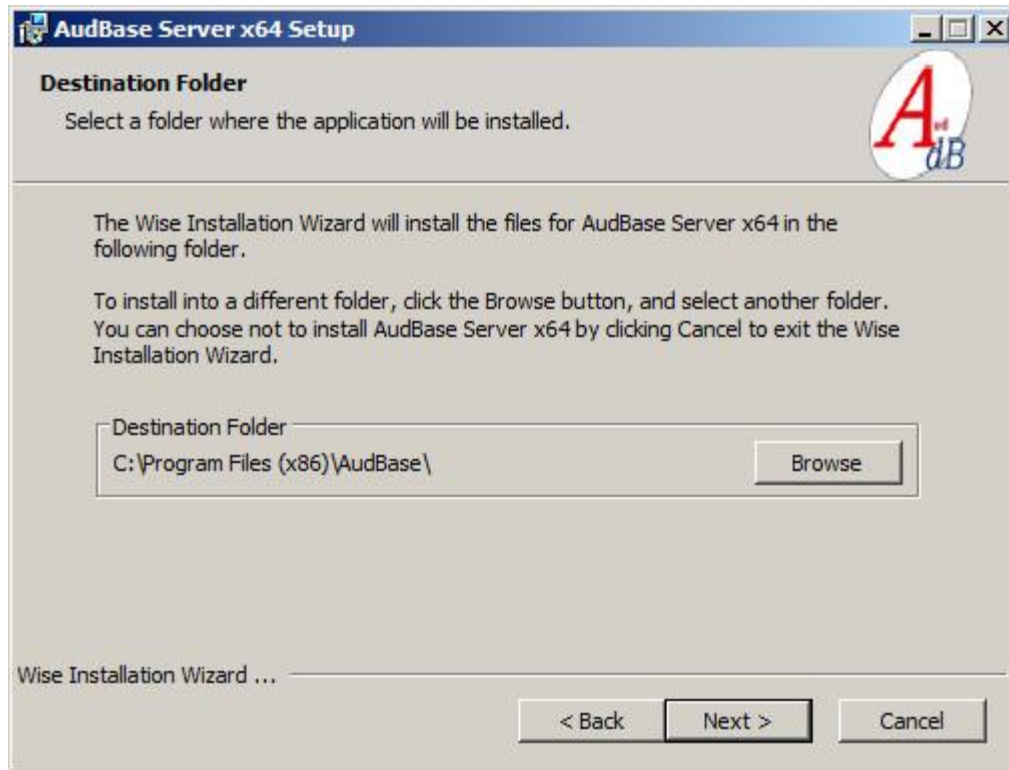
(Figure D)

- Read the readme document, which contains instructions if you are upgrading from a previous version of AudBase (Figure D)



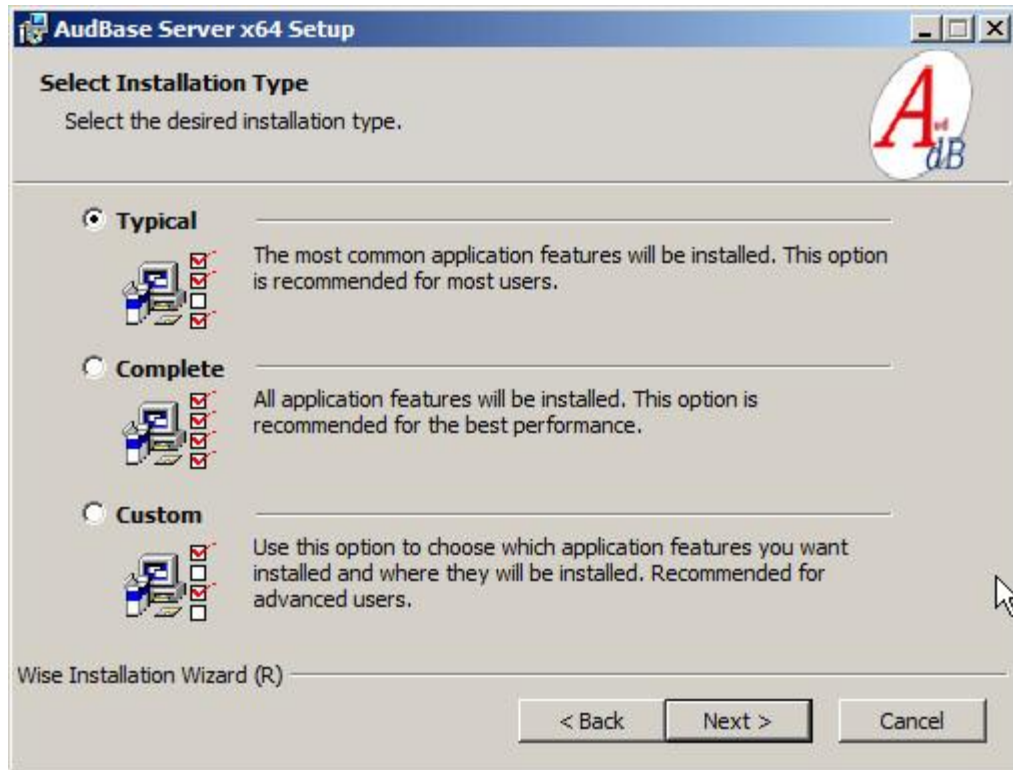
(Figure E)

Here you can select if AudBase will be available to all users on a system or only to the user logged in during the installation process (Figure E)



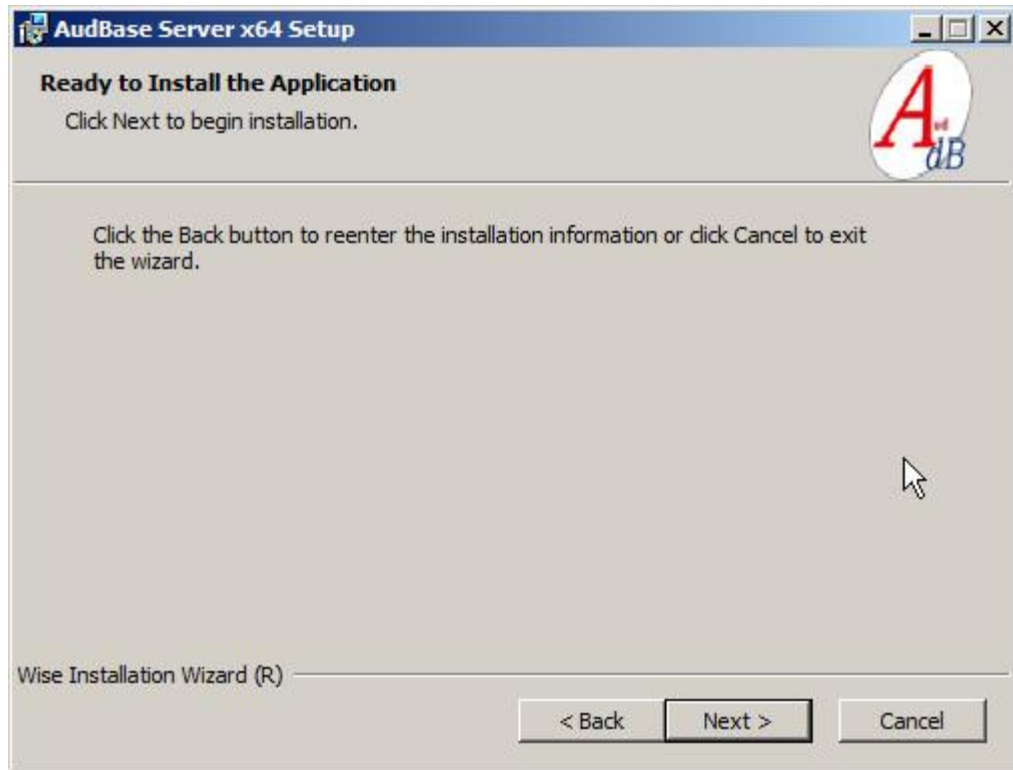
(Figure F)

Select the installation target (or just use the default) (Figure F)



(Figure G)

- Typical installation along with complete installation will install AudBase along with the print-to-doc functionality. Custom will give you the option to not install the PTD system (Figure G)



(Figure H)

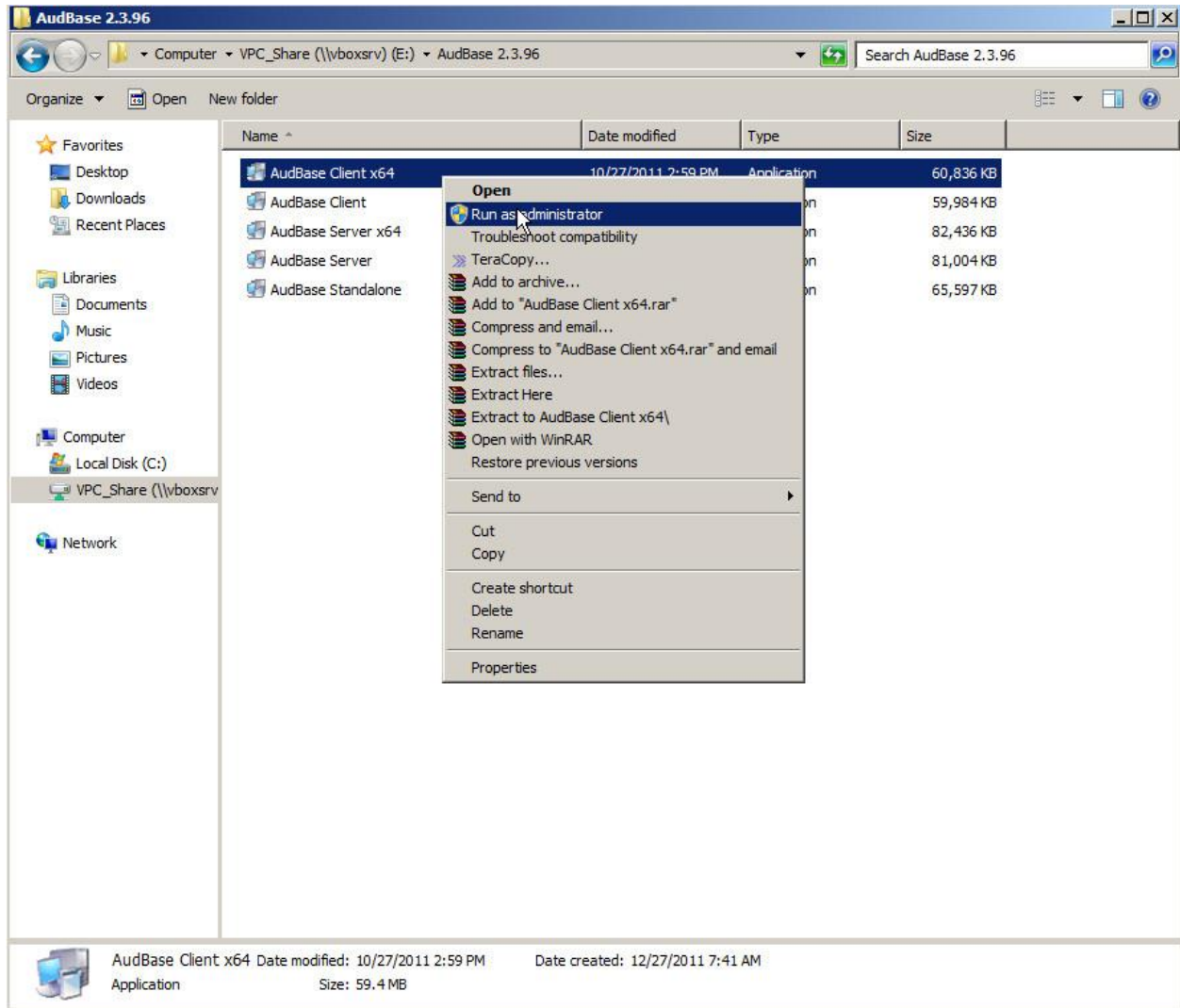
- At this point AudBase has collected your installation instructions and is ready to proceed (Figure H)
 - The installation will complete, then click "ok"



(Figure 1)

Next, we will install AudBase Client on the Server Machine as all configuration beyond the basic level is done with the client application. (Figure 1)

- Navigate to the location that you have stored the client application installation file



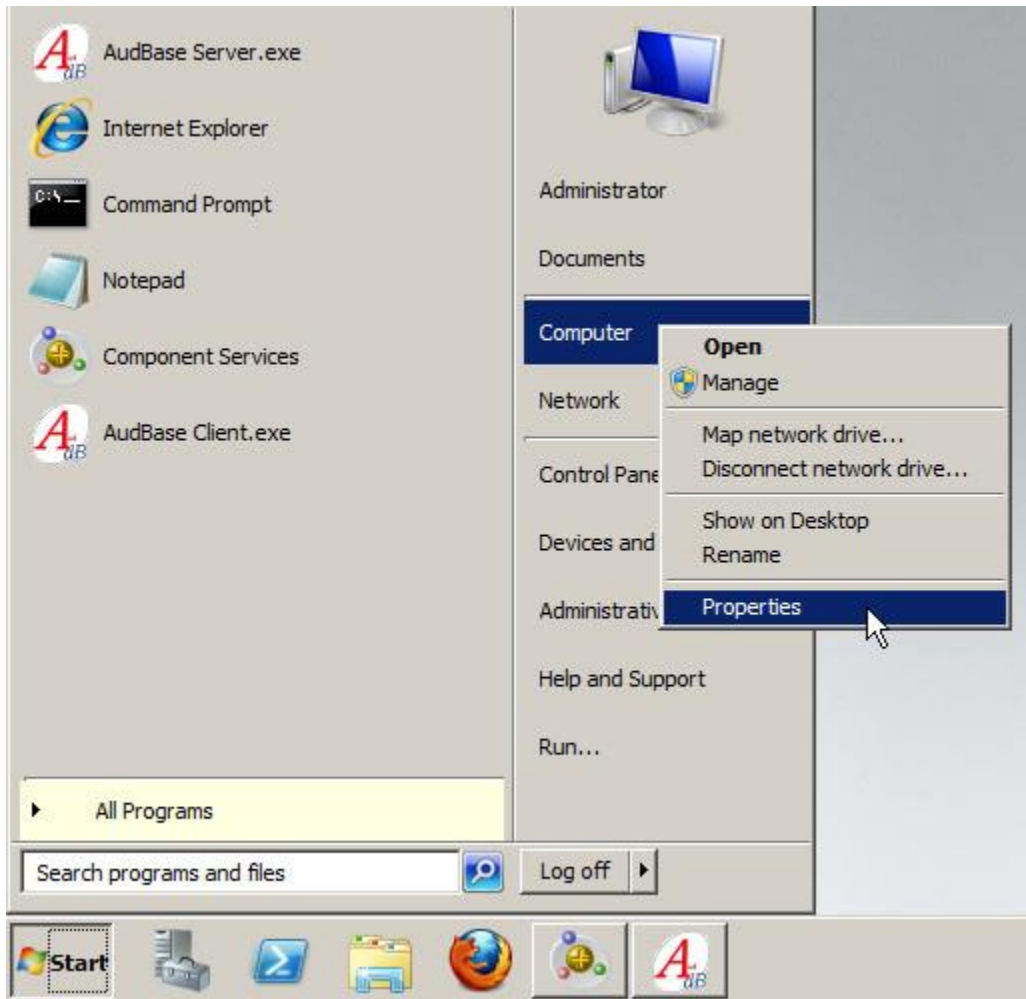
(Figure J)

- Just as with the Server installation file, right click on the client installation file and left click "run as administrator" from the context menu. (Figure J) Installation choices are similar to the Server installable options as noted above. Select as appropriate.

--Adding Microsoft Data Execution Prevention exceptions for AudBase--

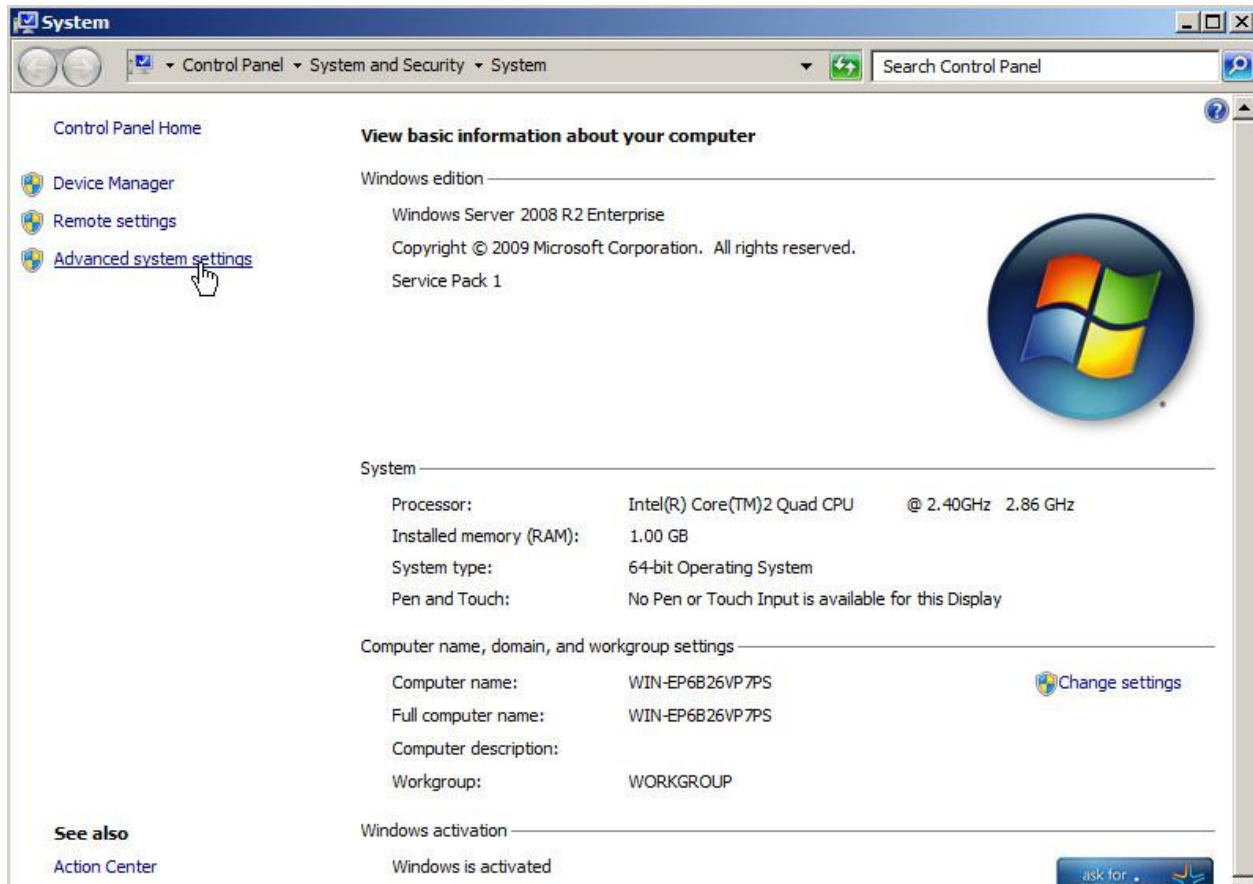
We now will need to add data execution prevention exceptions for systems using that feature in windows. (It is enabled by default on Windows 2008 and later) Click “Start”, then go over to Computer and right click, then move down the context menu to properties” and left click.

(Figure L)



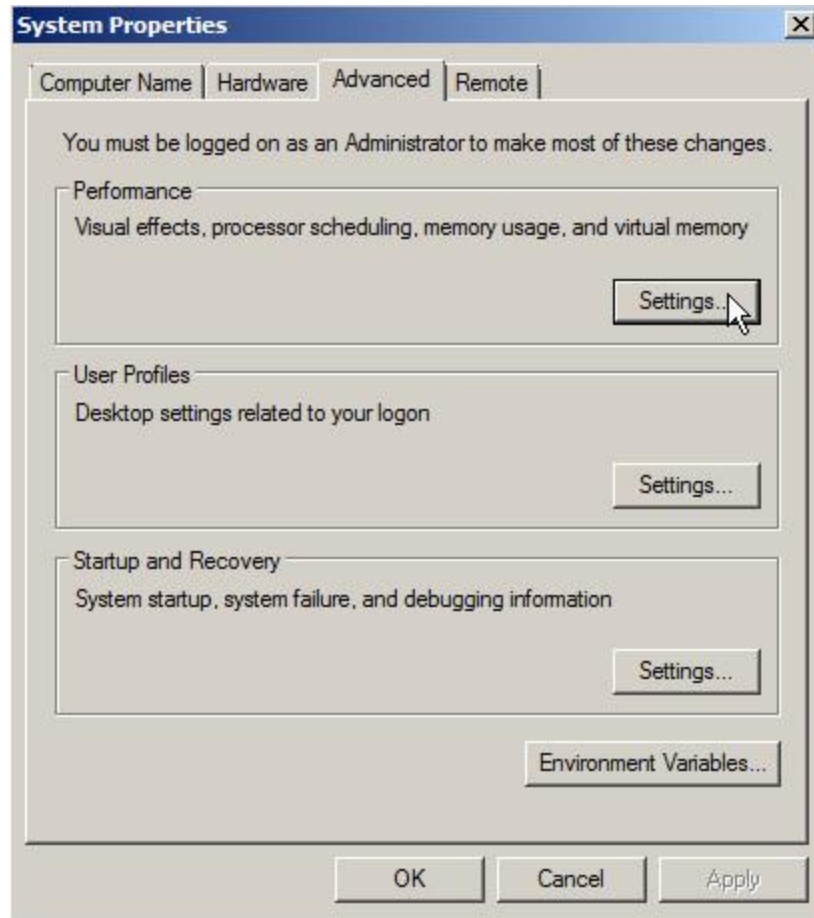
(Figure L)

- On the left side of the system window, click on “advanced system settings” (Figure M)



(Figure M)

- Under the “performance” box at the top of the system properties window that popped up, click “settings” (Figure N)



(Figure N)

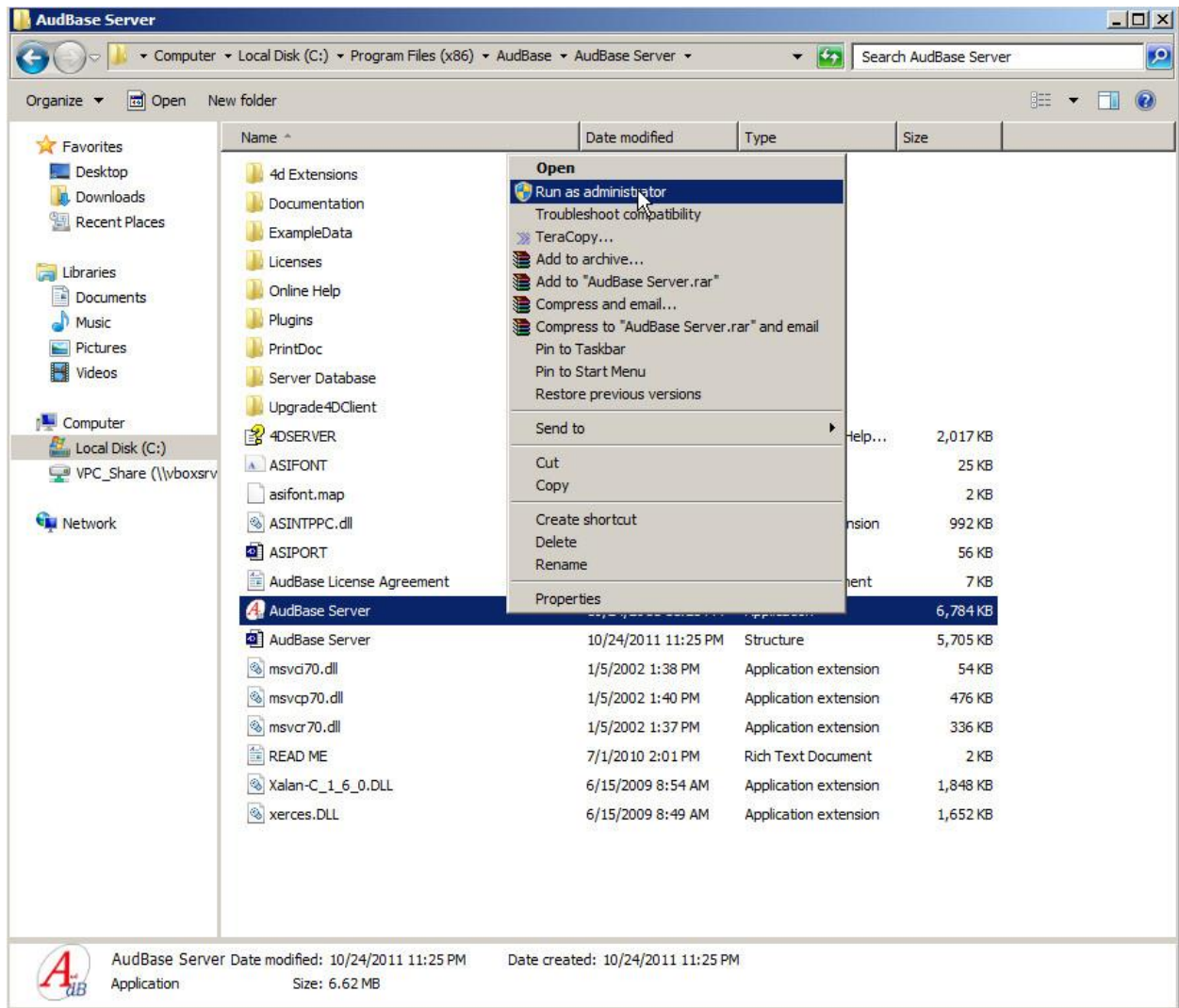
- Click on the third tab from the left, "Data Execution Prevention"
- Click on the "add" button near the bottom of the window (Figure O)



(Figure O)

- Navigate to the folder that you installed AudBase server on
 - Double click on the AudBase Server executable
- Now, repeat the previous three steps, but for AudBase client
 - Click OK, and close the remaining system windows

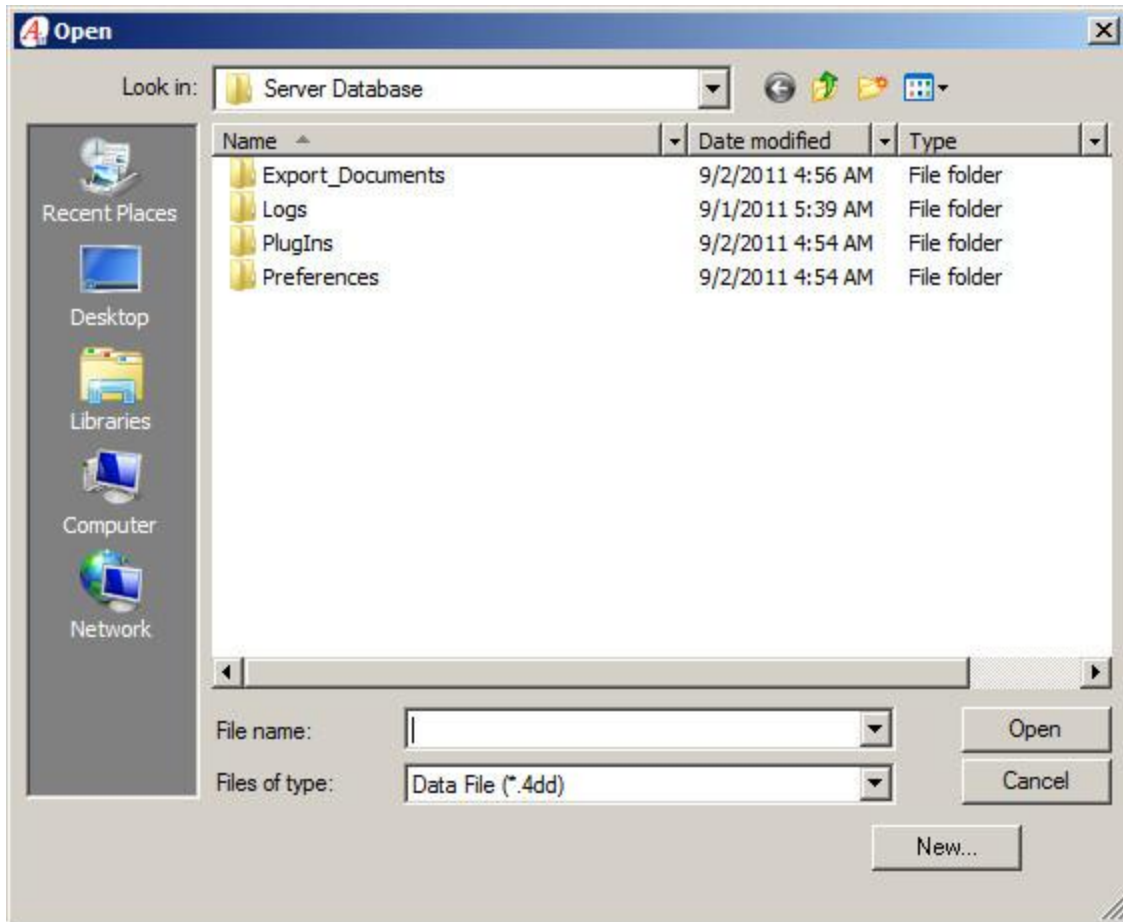
Next, let's complete the setup of AudBase Server



(Figure P)

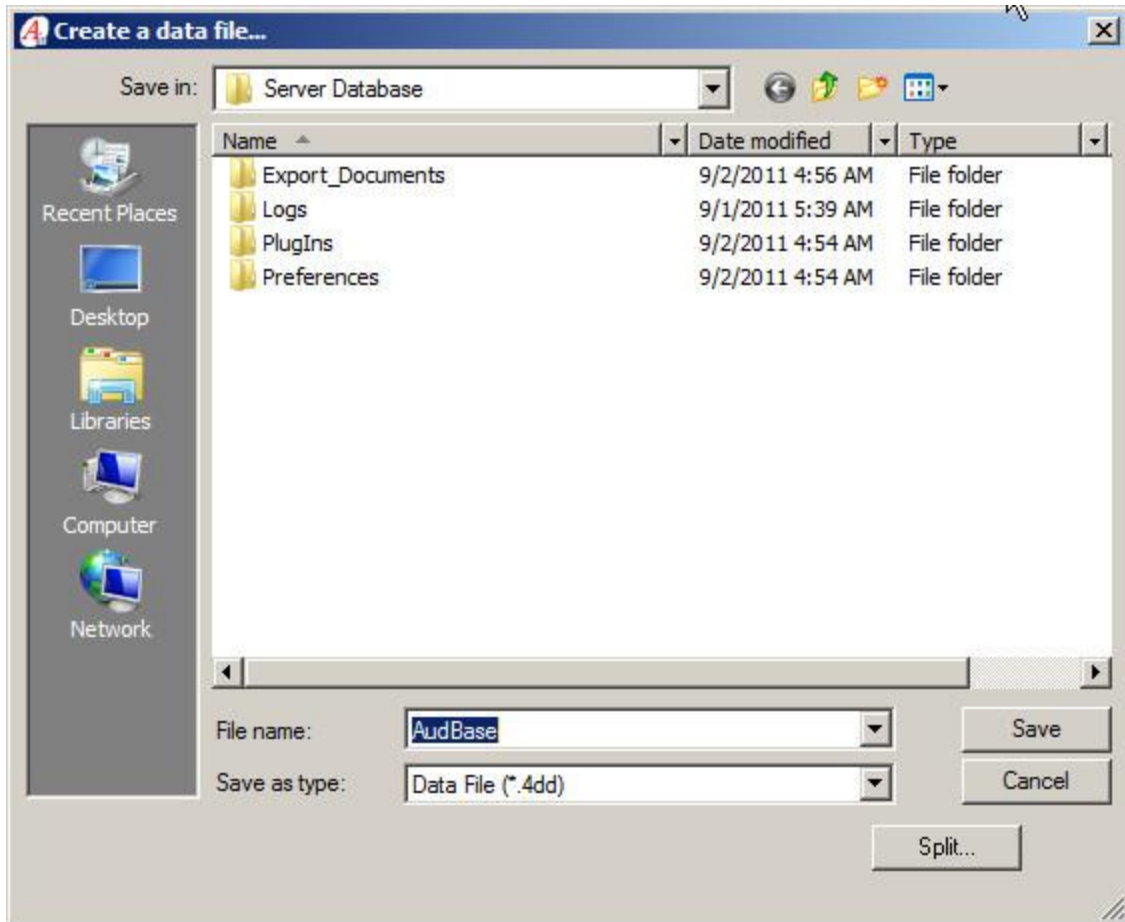
- Navigate to the installation directory that you selected earlier, and right click on "AudBase Server"; then select the "Run as administrator" option from the context menu. (Figure P)

(This will only need to be done on the initial installation to correctly install the print-to-doc functionality due to windows user level access restrictions.)



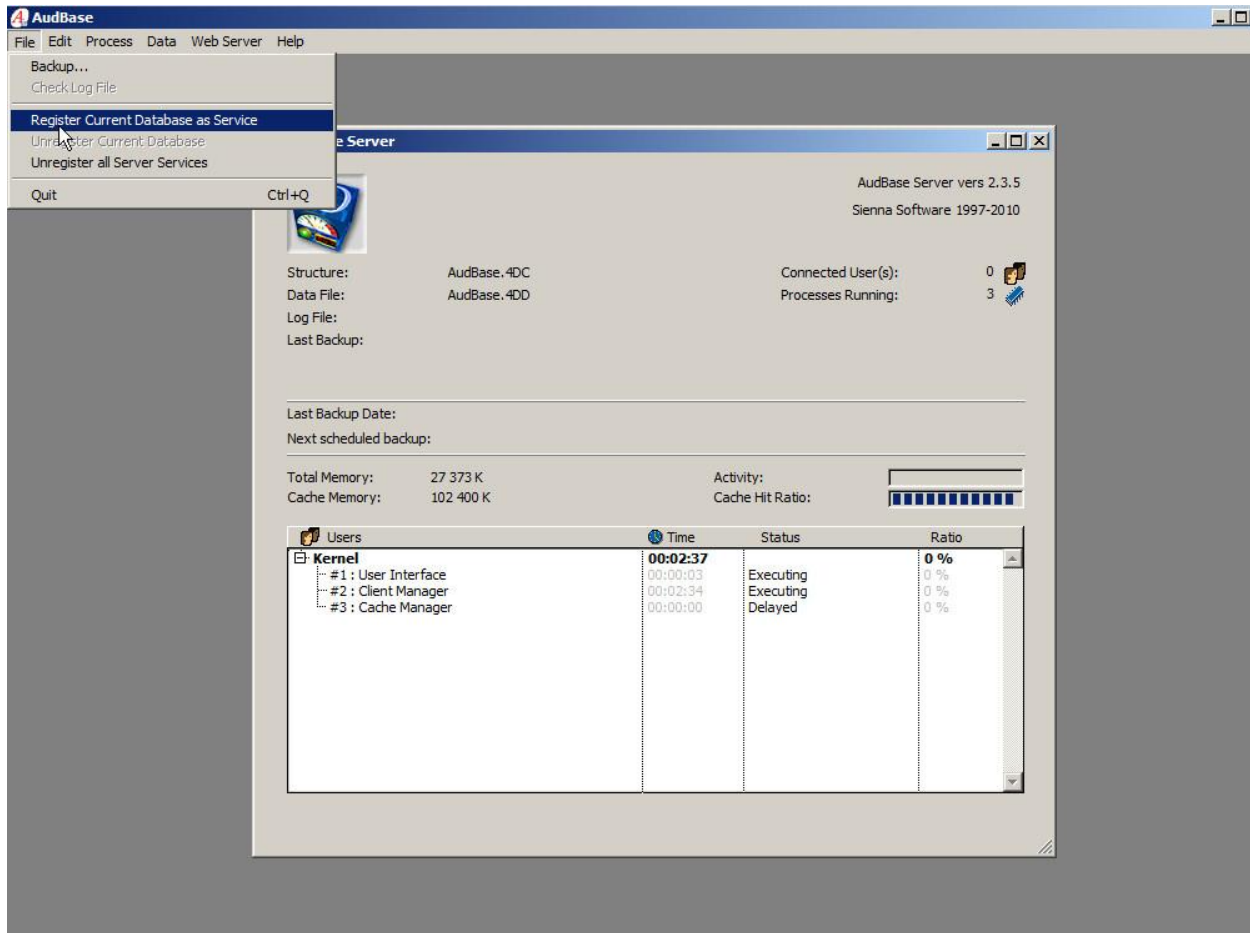
(Figure Q)

- You will be presented with this prompt to create a new database or navigate to an existing database. If you are installing AudBase for the first time, click the “New...” button. (Figure Q)



(Figure R)

Select your desired location to save your data file to (or use the default) and click “save” (Figure R)



(Figure S)

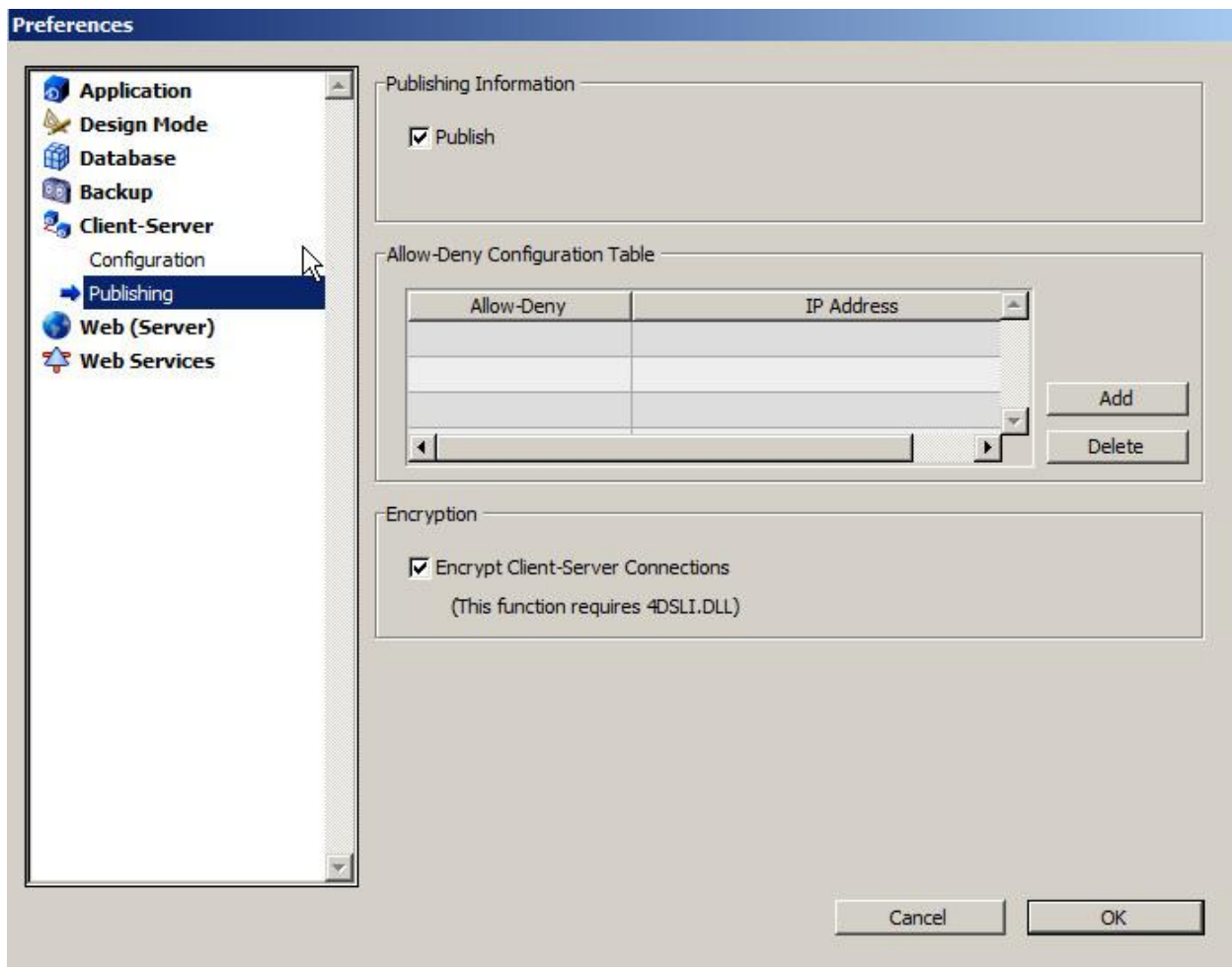
- Once a data file is selected, the startup process completes and you are looking at the AudBase Server control panel. (above)
- From the top menu, select “File”, then “Register Current Database as Service” (Figure S)

--Using AudBase with or without 128bit SSL TCP/IP encryption--

(If you wish to use the TCP/IP encryption system, follow these next steps to initially disable TCP/IP encryption, then Reference “Configuring AudBase with 128bit SSL encryption” at the end of this guide for further instructions)

- Select “edit” from the top of the AudBase server control panel, then click “preferences”
 - Click “client-server”, then click “publishing”
- Uncheck “Encrypt Client-Server Connections” (if checked, depending on version)

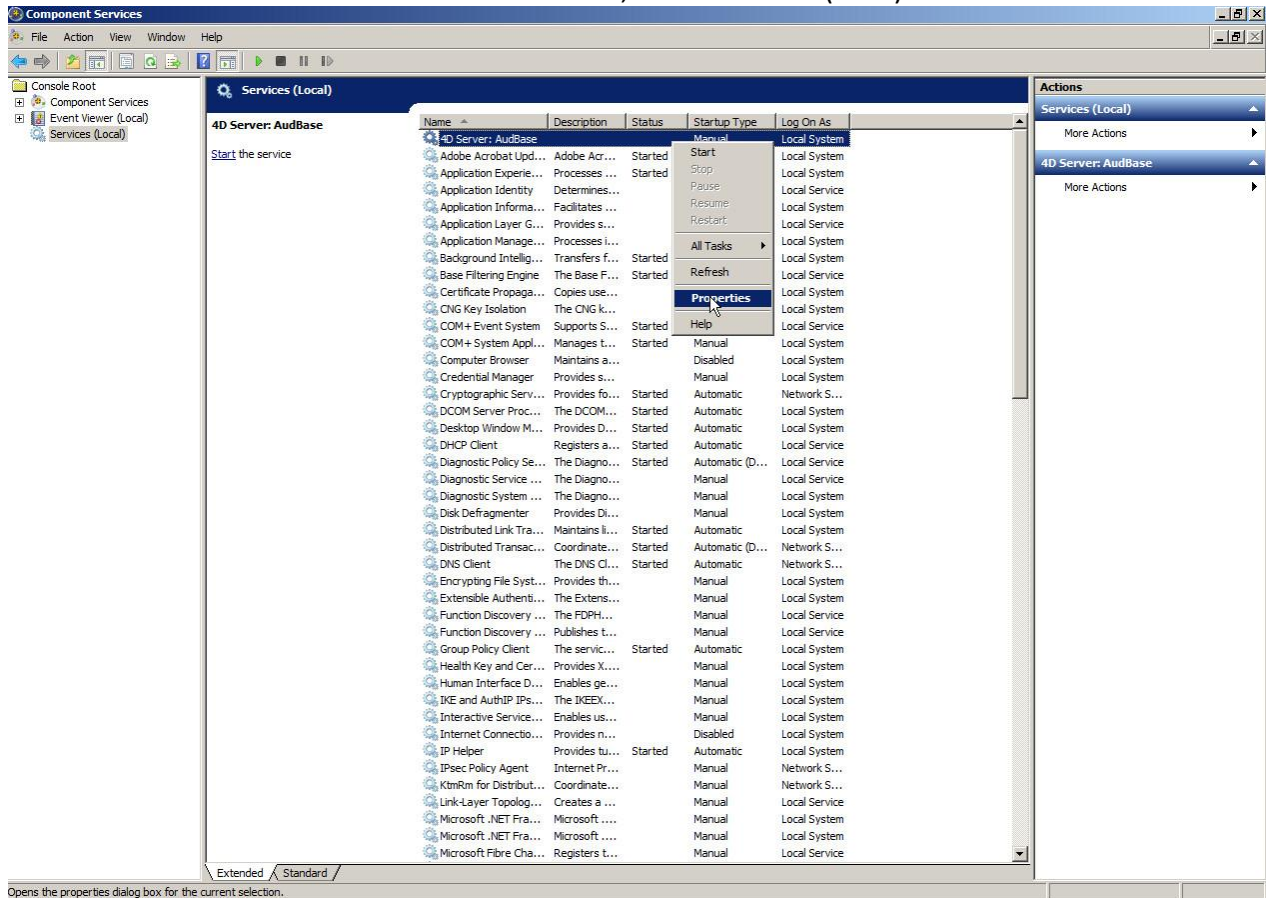
(Figure T)



(Figure T)

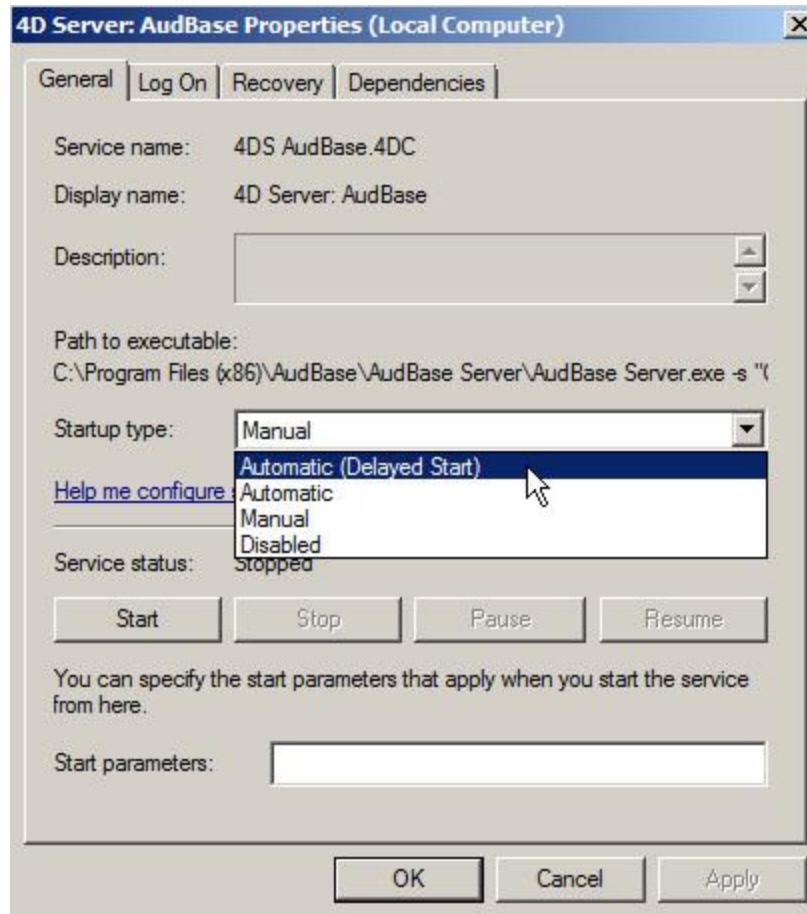
- Click “ok”
- Select “file” then “quit”

- Next, we will set AudBase server up to run as an automated service.
- Click “start”, then “run”, then type services and hit enter
 - This is the windows Component Services menu.
 - On the left console root tree, click “services (local)”



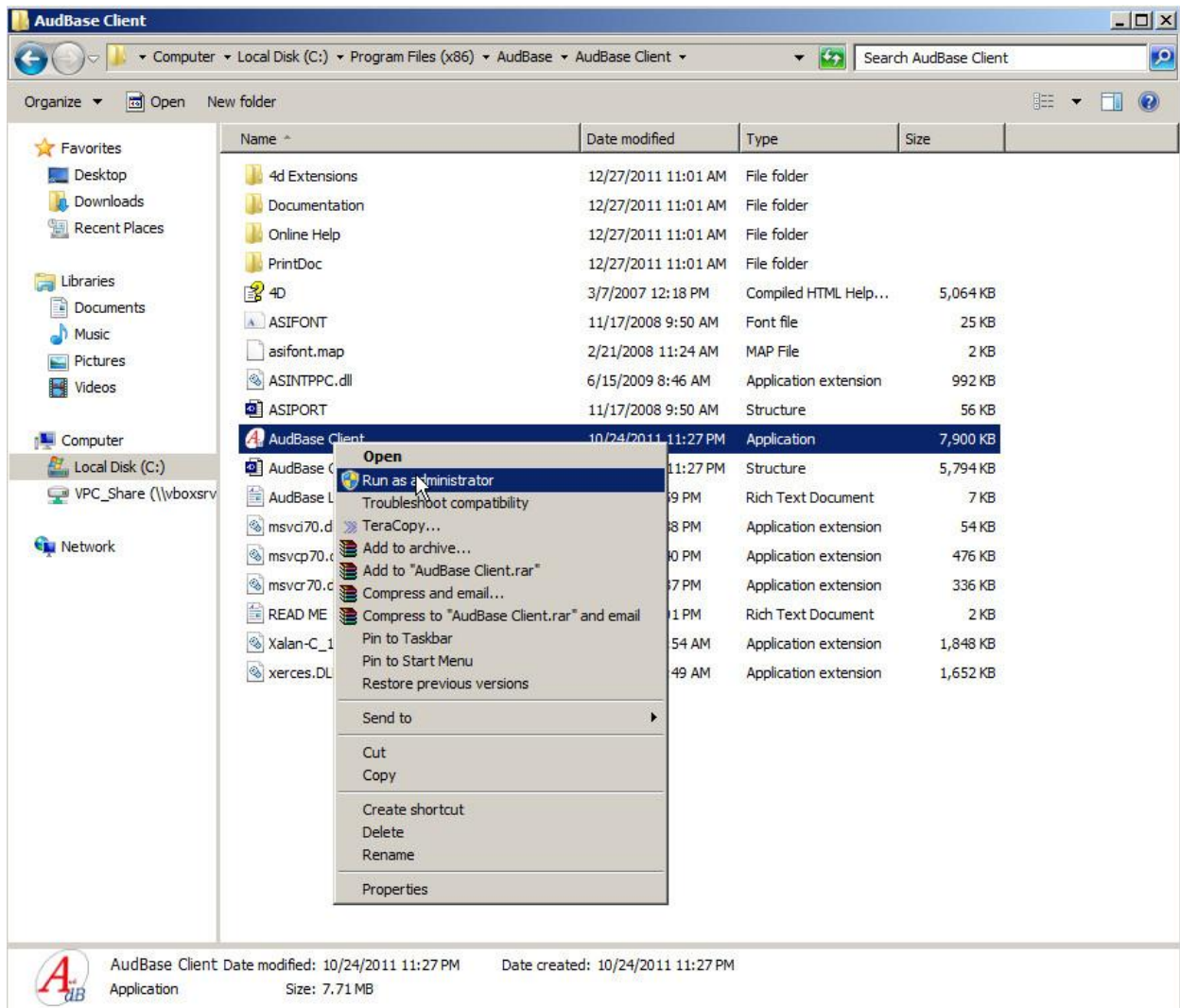
(Figure U)

- On the services menu, right click on “4D Server : AudBase”, then select “properties” (Figure U)



(Figure V)

- Select Startup type, then select “Automatic (delayed start)”, then click “start” (Figure V), then click “ok”
 - AudBase Server will now be running as a Windows Service in the background.



(Figure K)

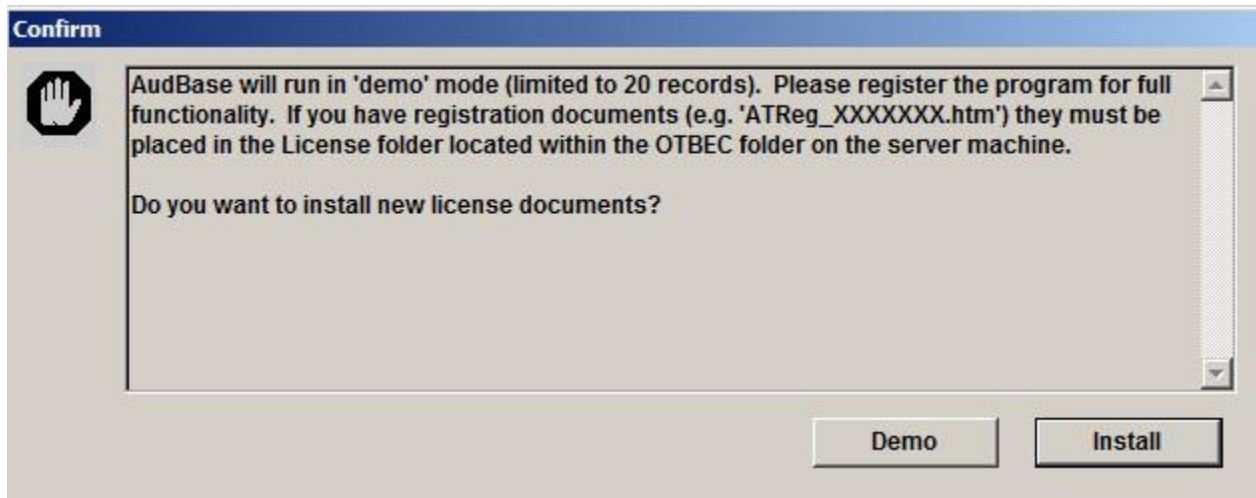
- As with the Server application, the first time you run AudBase client you will need to navigate to the installation location you selected during the install process, right click on the "audbase client" application, then left click on "run as administrator" due to the access level restrictions inherent in versions of Windows beyond XP. (Figure K)

- You will be presented with the prompt to assign an administrator password. You will need to enter it twice to confirm. (Figure W)



(Figure W)

- You will be prompted to assign a participant number. If you are not using AudBase to conduct a multi-site research study, click “continue” and AudBase will auto-assign the participant number as 1.
- Next, you will be presented with the prompt to install your AudBase license, click “install” and navigate to your license file. (Figure X)

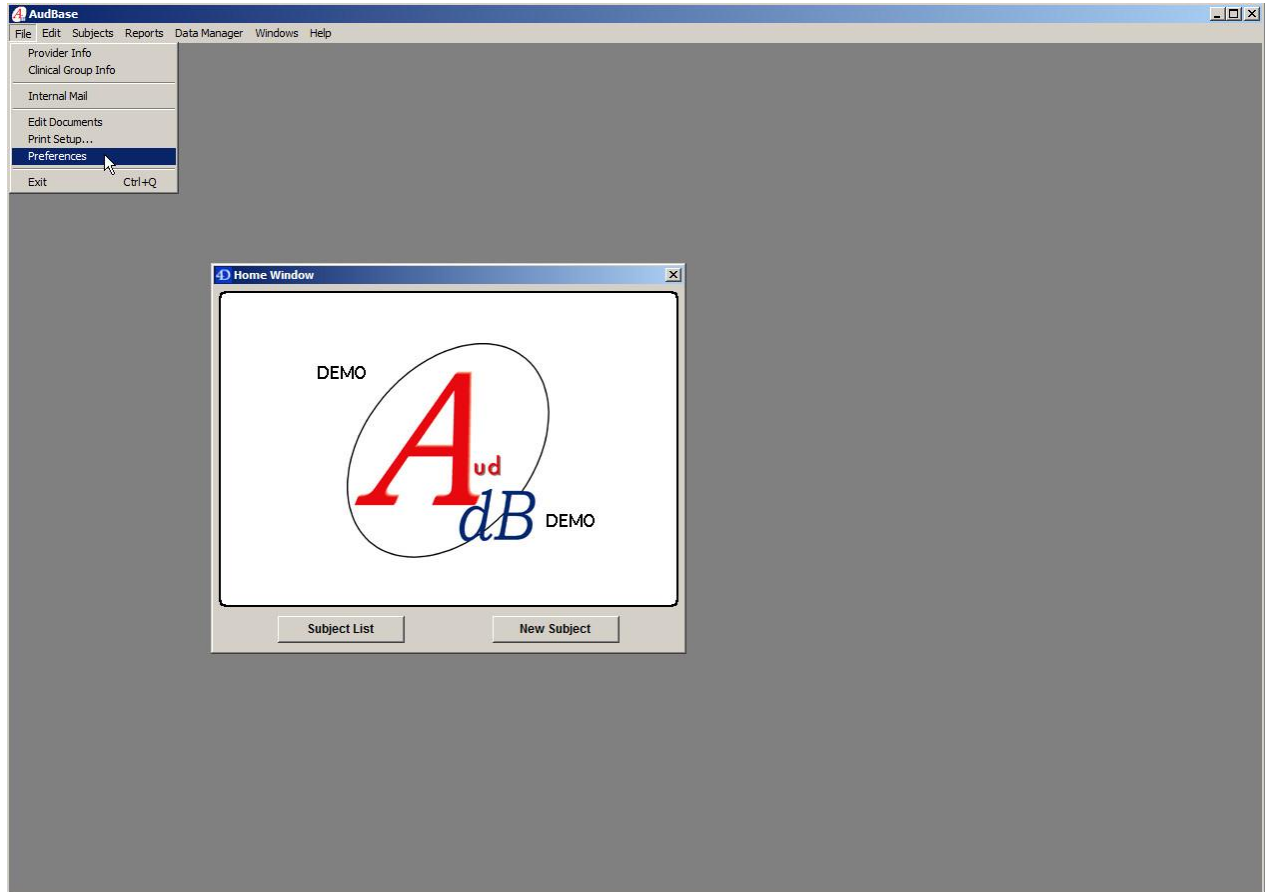


(Figure X)

- After loading your license file(s), AudBase will inform you that you will need to setup the provider list, as well as then a clinical group(s). Simply click “ok” at these prompts.
 - You will now find yourself at the audbase client home screen

--Loading print-to-doc licenses and enabling functionality--

- Log in as administrator, and from the AudBase home screen, select file from the top menu, then preferences. (Figure Y)



(Figure Y)

- Click on "Print-To-Document (Admin only)"
- On the right side of the window, click on the "Load License Info" button
 - Click "yes" at the prompt to move license files
 - Navigate to the location of the print-to-doc license file(s)
 - Click "ok"
- Reference "configuring print-to-doc" for instructions on configuration of the print-to-doc subsystem

--This completes the AudBase Server installation process--

- In the future, simply launch the AudBase client application from the desktop shortcut



--Configuring AudBase Print-to-Doc system--

- In windows, click “start”, then “(my) computer”
 - Double click on “(Local Disk) C:”
- Click “new folder” (or right click in the window, go to new, then folder)
 - Name the folder “Audio Reports”
 - Close the local disk window
- Next, Log into Audbase and from the home screen, click file, preferences (Figure Y)
 - Click “print-to-document (admin only)”
 - On the right side of the window, click the “document options (local)” button
- Click the “assign save directory button, and navigate to “c:\audio reports” (Or wherever you would like the document exports to be placed)
- From here you will need to know what format you want the exported documents to be in. (PDF/JPG/TIF/BMF/ETC...) In this example we will use the TIF file format (typical for DoD applications)
 - Under the document formats box, click the “document formats” button
 - Click “raster formats” (Figure Y1)
 - Click and drag “TIF (*.TIF)” from the left window of options to the right window
 - Click the “document options” button
 - Click “BPP” and select “8”, then click “ok”
 - Next, click in the “page resolution” box, and change it to “150”

In document base name, you have the ability to predefine the file names outputted from the print-to-doc system

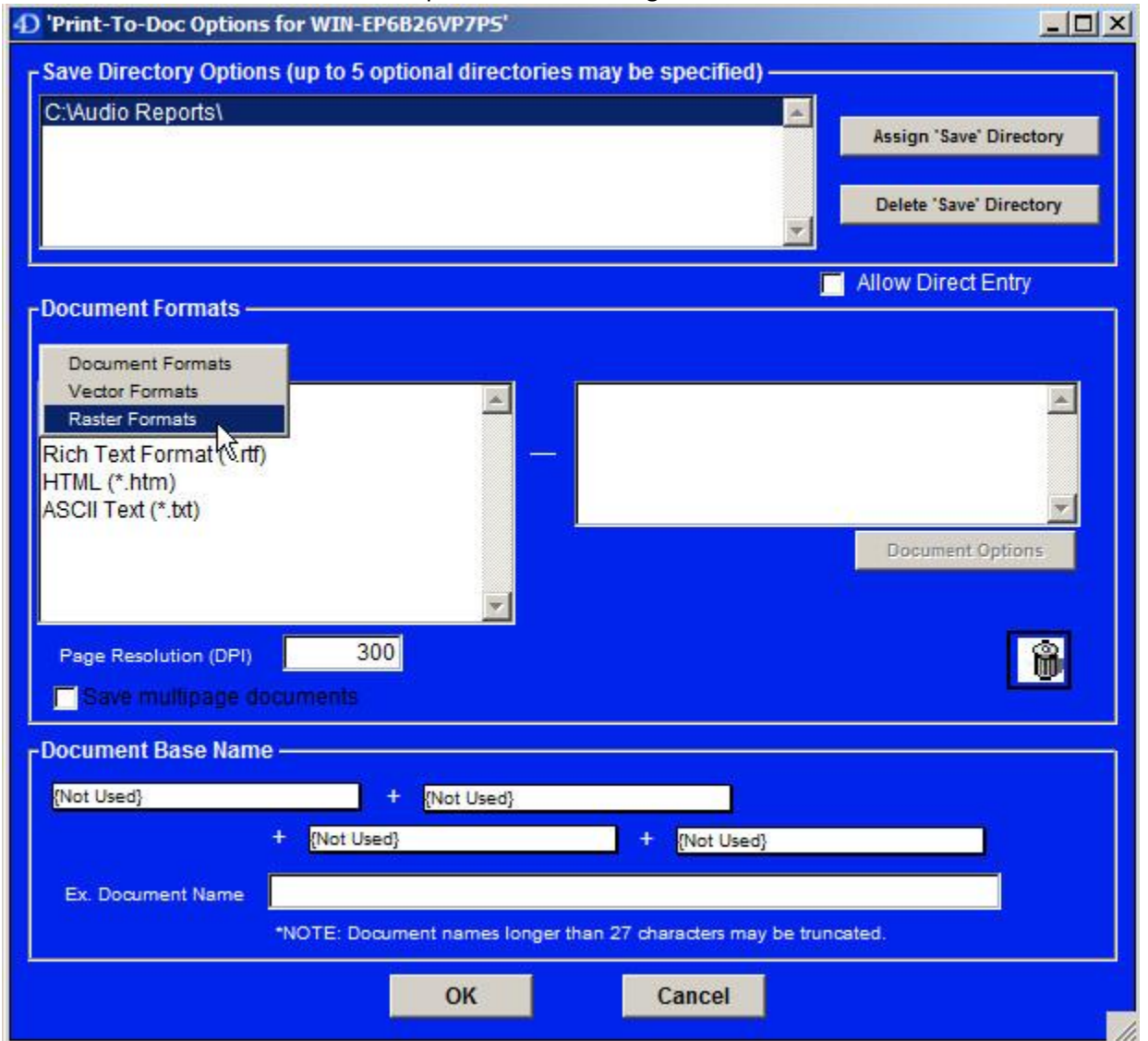
- Click in the first box, and select “last name”
- Click in the second box, and select “first name”
- Click in the third box, and select “study date”

(Figure Y2)

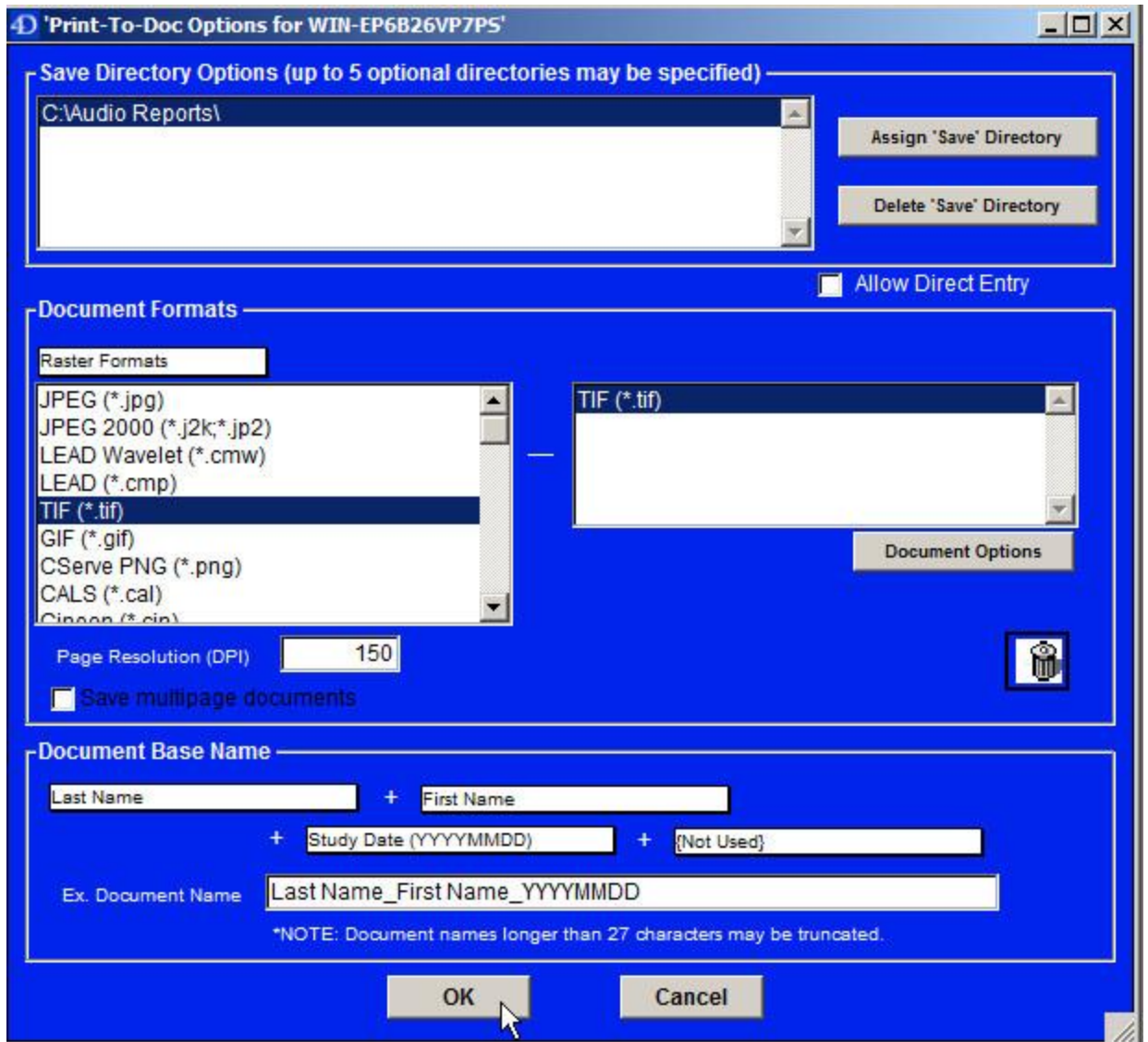
This configuration will create a TIF file using the last name, first name, and test date
(Jones_John_20120101.TIF)

- Click “ok”

- This completes the PTD configuration



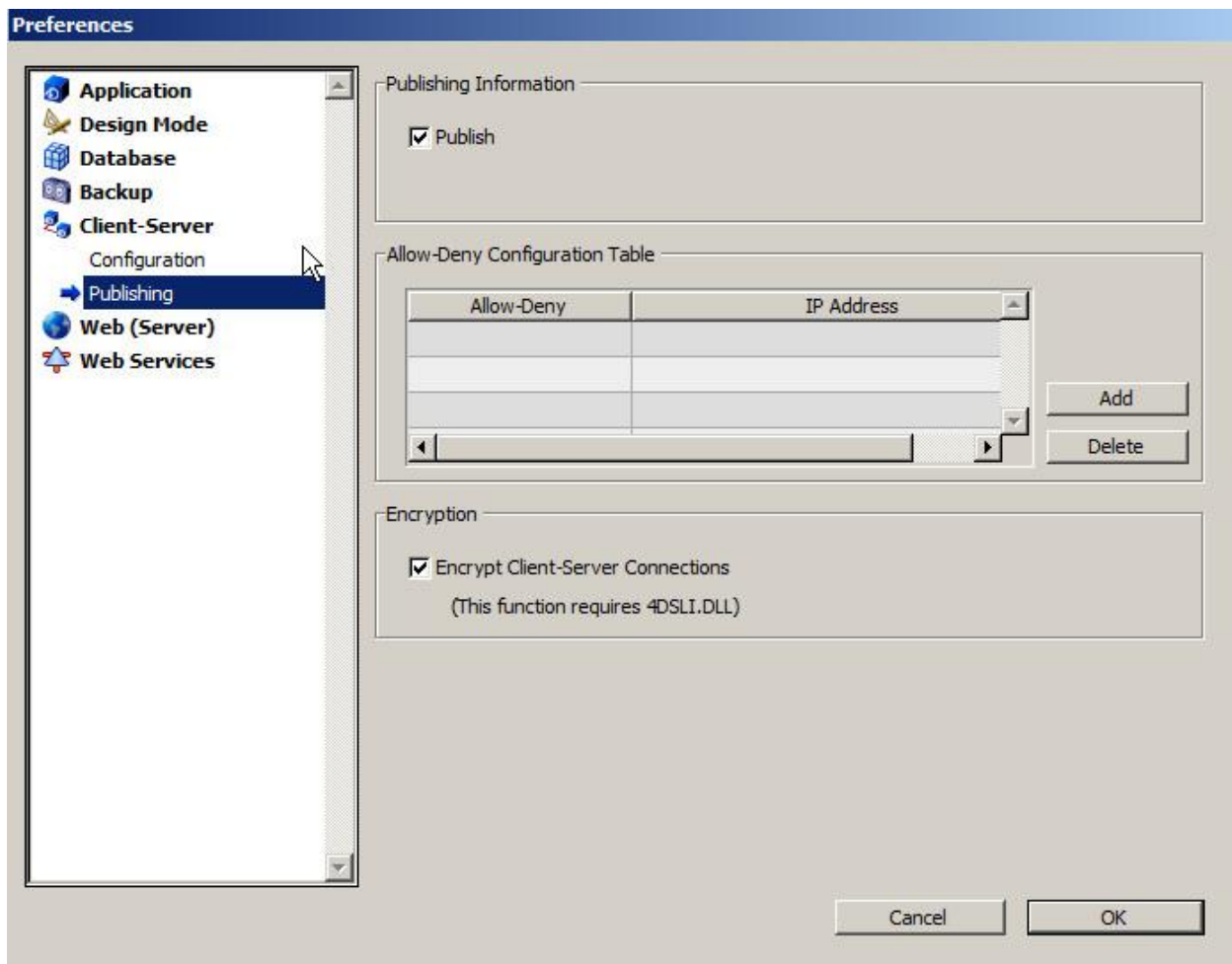
(Figure Y1)



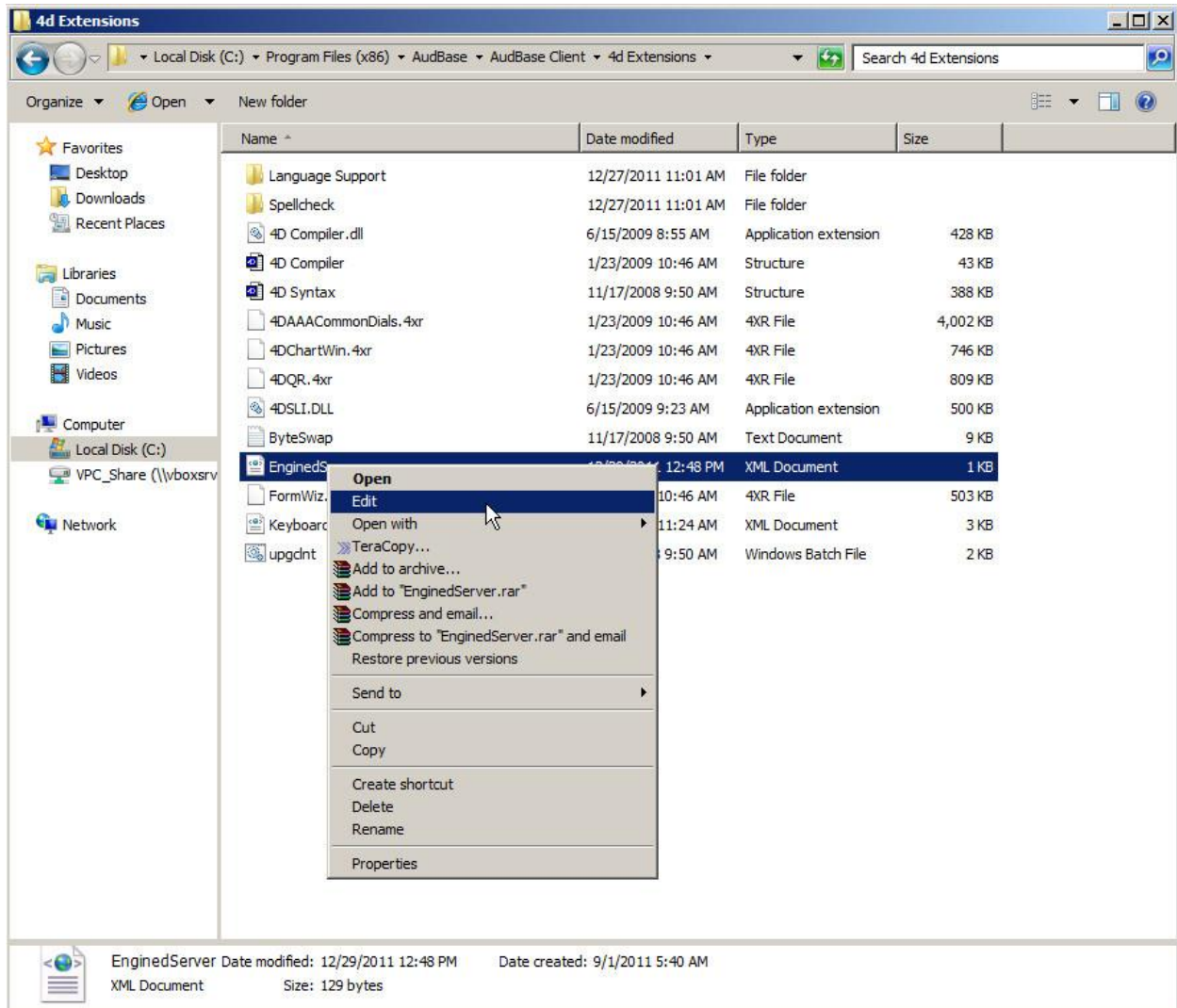
(Figure Y2)

--Configuring AudBase with 128 bit SSL Server/Client encryption--

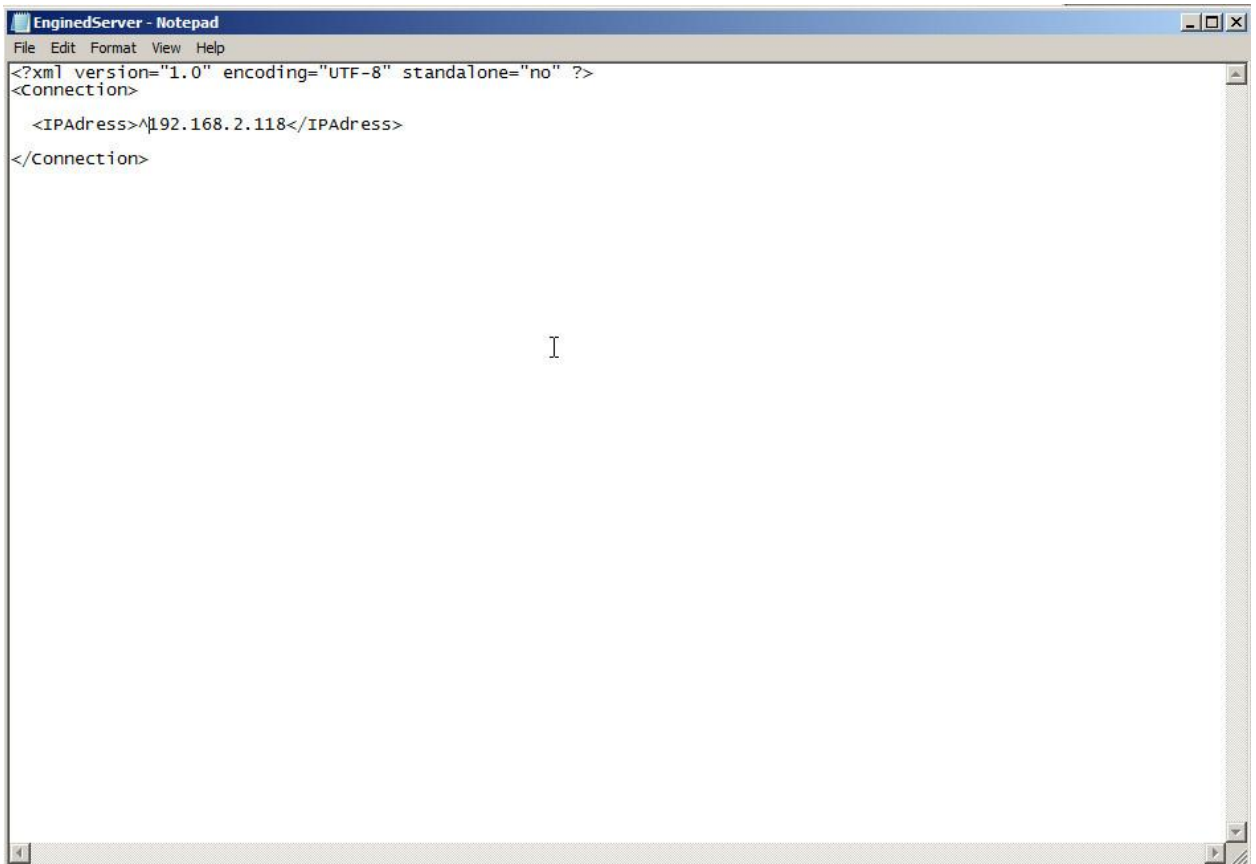
- Complete the steps outlined on page 19 of this installation guide
- Under the windows services menu, stop the 4D Server : AudBase service
- Startup AudBase server under the local account using the desktop shortcut
- Select “edit” from the top of the AudBase server control panel, then click “preferences”
 - Click “client-server”, then click “publishing”
 - Check “Encrypt Client-Server Connections”
 - Close AudBase Server and restart the service



- Next, on the client (pc's), navigate to
C:\program files (x86)\AudBase\AudBase Client\4d extensions\
(this is the default location, if you installed elsewhere navigate as appropriate)



- Right click on “enginedserver.xml” and select “edit”



```
<?xml version="1.0" encoding="UTF-8" standalone="no" ?>
<Connection>
  <IPAdress>^|192.168.2.118</IPAdress>
</Connection>
```

- Insert a carat (shift + 6) character directly in front of the first group of numbers in the server's ip address in the xml file.
 - Click file, save ; then file, exit

AudBase client and server are now configured to use 128bit SSL encrypted communications

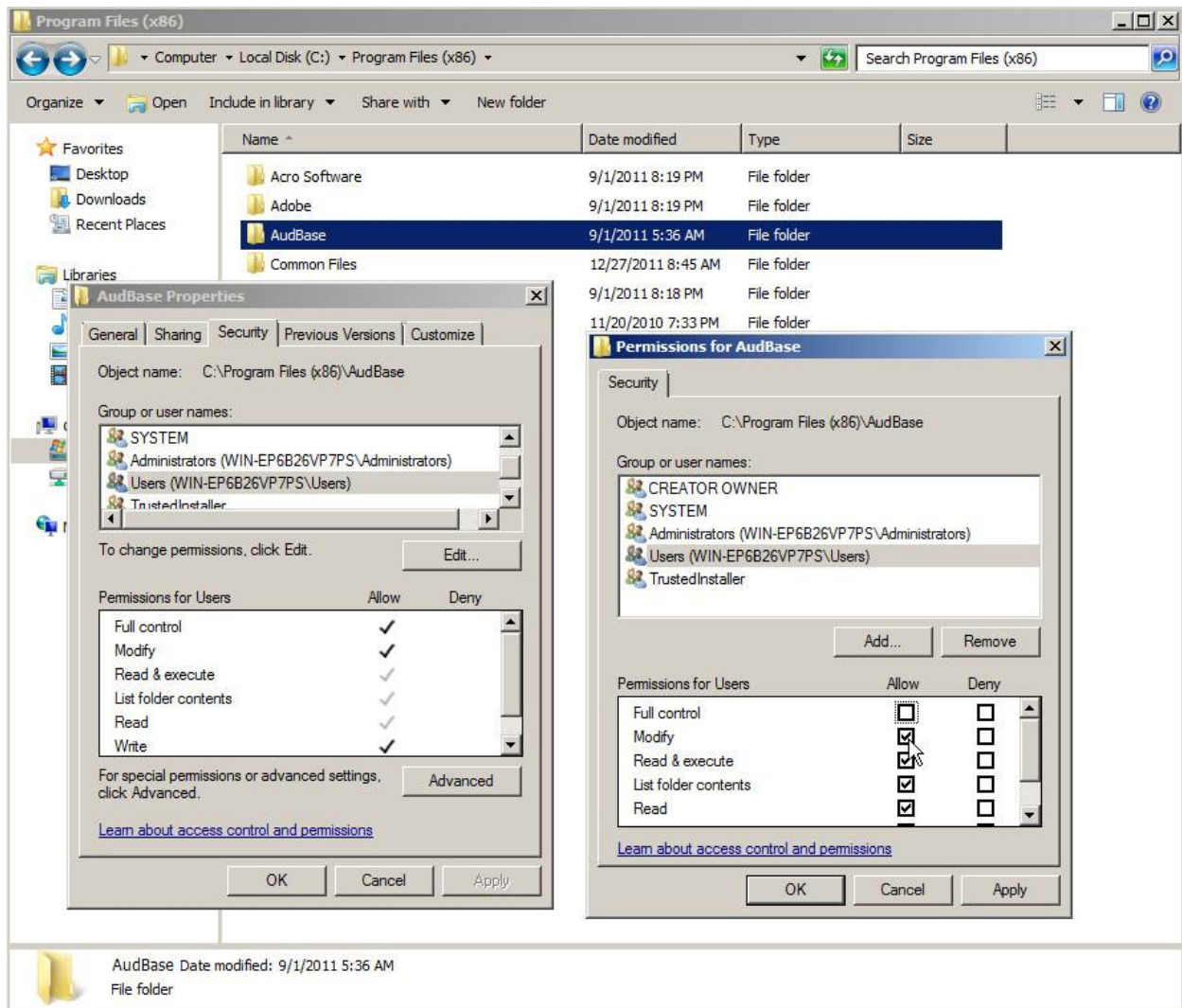
--Modifying Resource Permissions on restricted PC's--

There are 3 (three) items on a standard AudBase client PC that will need to be made available to restricted end users. (Typical for DoD/VA/hardened pc's)

- Click start, then (my) computer
- Double click "C: [local disk]"
- Double click on "Program Files (x86)"

(or simply "program files" on a 32 bit system)

- Right click on "AudBase", then go down and left click on "properties"
- Click security, then, depending on OS, edit (or in win xp, skip the edit step)
- Select "users" (or, a predefined windows group of AudBase users)
- Click modify



- Then click "ok", then "ok" again on the properties page

- This process will need to be repeated for the “C:\Audio Reports” folder (all steps common)

Next, we will need to make the PTD permissions available to the end user

- Click start, then devices and printers
 - Right click on 0_AudBase_PTD
 - Left click “printer properties”
 - Click “security”
 - “Everyone” should be the default selected group
- Check the boxes for “manage this printer” as well as “manage documents”
 - Click “ok”, then close the devices and printers window

